



the carlyle, a rosewood hotel
tel: +1 212 744 1600 | fax: +1 212 717 4682
rosewoodhotels.com/carlyle | thecarlyle@rosewoodhotels.com

rosewood sales offices

new york	+1 212 593 2252
los angeles	+1 310 843 9097
dallas	+1 214 880 4231
chicago	+1 312 643 2203
miami	+1 954 507 6188
london	+44 203 189 2126
dubai	+971 4 380 6400
beijing	+86 10 6536 0187
shanghai	+86 21 3133 5993

35 east 76th street
new york, new york 10021
usa

A timeless classic, The Carlyle, A Rosewood Hotel has been called home by leaders in world affairs, business, society and the arts since its debut in 1930. Brilliantly positioned on Madison Avenue, in the heart of Manhattan's Upper East Side near Central Park, the 35-story luxury hotel is a true New York landmark – a showcase of great art, purveyor of privacy and sanctuary of refined taste. Guests feel truly ensconced in the hotel's elegant residential atmosphere under the care of The Carlyle's discreet and polished staff.

189
rooms + suites

3
event spaces

4
restaurants + bars



The Carlyle

A ROSEWOOD HOTEL
NEW YORK





Private Dining, Meeting & Event Space

Extraordinary events begin with extraordinary venues. At The Carlyle, guests discover the grandeur and elegance of special occasions in the heart of New York’s Upper East Side. The Carlyle can truly play host to any event and is the ideal setting for weddings, anniversaries and other milestone celebrations, as well as board meetings and business entertainment. The Carlyle additionally offers a variety of unique private dining and event options in our beloved venues including Bemelmans Bar, Café Carlyle and The Carlyle Restaurant.

Trianon

The Trianon Suite is a lively and elegantly appointed space fusing modern refinement with classic architecture. It is a favorite for dinner and dancing and can be divided into two banqueting suites for smaller groups and events.

Versailles

The intimate Versailles Suite exudes radiant ambience in a beautifully appointed banquet space. Reflecting an Upper East Side residential home with Deco stylings, the Versailles Suite provides an abundance of natural light and is the perfect setting for board meetings and other daytime events.

Foyer

The Foyer is a glamorous common space adjoining the Trianon and Versailles Suites. Here, the shimmer of gold, the reflection of custom mirrors and sensuousness of velvet are central design elements, lending the space the aura of a suave, members-only club.

Private Dining

We are excited to accommodate various private dining options at The Carlyle. From renting out The Carlyle Restaurant, Café Carlyle, Bemelmans Bar or the use of our intimate, semiprivate dining room in New York City’s The Carlyle Restaurant.

The Carlyle Restaurant

The Carlyle Restaurant’s elegant semi-private dining room is ideal for celebratory luncheons, bridal events and intimate dinners up to 20 guests. For larger festivities, the main dining room provides a chic backdrop to accommodate lunches or dinners up to 120 seated guests.

Café Carlyle

The legendary Café Carlyle offers a unique performance setting for private dinners and events up to 80 seated guests, including a stage with a Steinway piano for live entertainment. The space can also be utilized for daytime meetings and luncheons, as well as late-night events.

Bemelmans Bar

The famed Bemelmans Bar offers a whimsical and iconic setting for celebrations up to 90 guests, including a Steinway piano for live jazz performances.

Lower Gallery

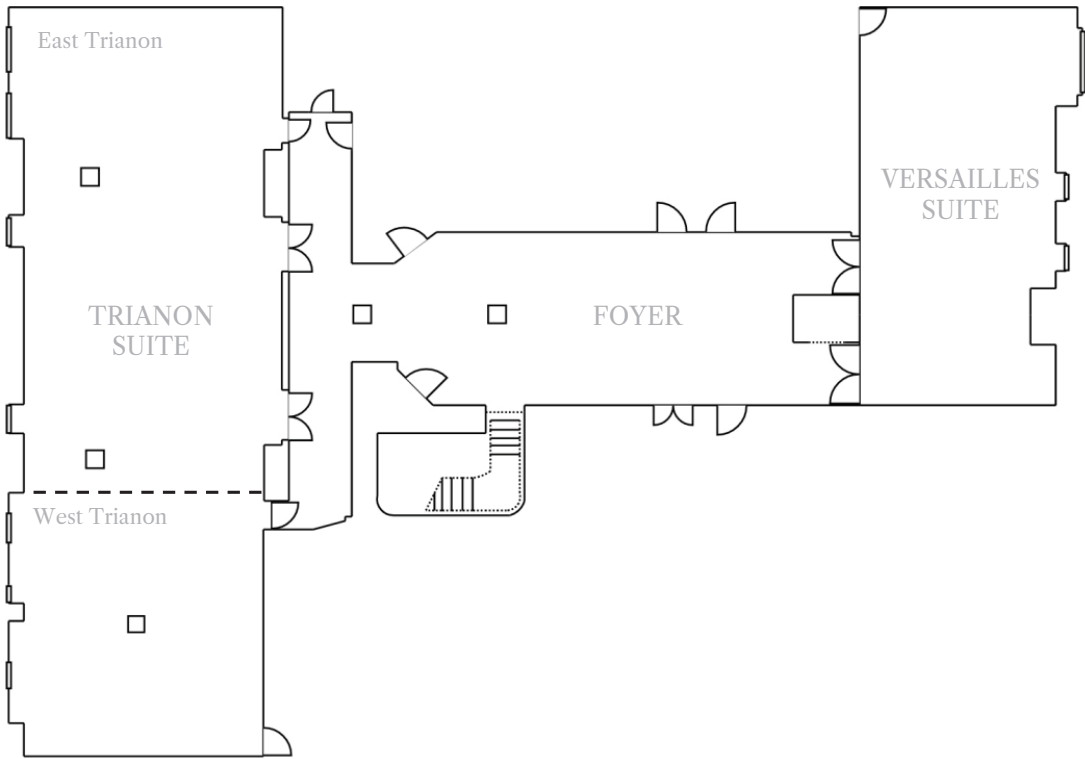
The Lower Gallery is the ideal space for festive luncheons and afternoon tea up to 22 guests.



Capacity and Dimensions									
	Sq. Ft.	Size (Ft.)	Ceiling	Reception	Dining	Theater	Classroom	Conference	U-Shape
Trianon Suite	1,725	69' x 25'	8' 8"	180	120	140	70	40	30
East Trianon	1,100	44' x 25'	8' 8"	130	80	115	40	30	25
West Trianon	625	25' x 25'	8' 8"	50	40	25	—	14	—
Foyer	736	46' x 16'	8' 8"	70	—	—	—	—	—
Versailles Suite	580	29' x 20'	8' 8"	70	60	80	30	30	25
Café Carlyle	988	38' x 26'	8' 8"	100	60 (rounds)	80 (existing)	—	—	—
Bemelmans Bar	672	32' x 21'	8' 1"	90	—	—	—	—	—
The Carlyle Restaurant	1,090	30' x 25'	13'	175	120	—	—	—	—
Semi-Private Room	336	24' x 14'	13'	30	20	—	—	20	—
Lower Gallery	336	28' x 12'	13'	30	22	—	—	22	—

*The Foyer is a common area between the Trianon and Versailles Suites.
**Room capacities do not reflect footage for audio-visual or miscellaneous equipment, entertainment or dancing.

FLOOR PLAN: 2ND FLOOR BANQUET SPACE





the island of manhattan.

Offering everything – arts and entertainment, endless sights and sounds.

A charged, ever-changing cityscape.

Defined by the season. Fresh on each new visit.

a sense *of* discovery. a sense *of* place.

Location

Situated in the heart of Manhattan’s elegant Upper East Side, The Carlyle has been a classic landmark on Madison Avenue and 76th Street since 1930. Located just one block from Central Park, The Carlyle is a 35-story hotel surrounded by galleries, designer boutiques and the city’s most popular art museums.

Accommodations

Designed by New York-based, award-winning design practice tonychi the emotion of The Carlyle’s newly refreshed guest rooms are inspired by the glamour and beauty of Manhattan’s pre-war era, the Upper East Side, and the dignified beau monde whose footsteps graced the hallowed halls of this elegant and storied hotel residence.

Meetings & Events

The hotel provides an atmosphere of timeless elegance with two spacious event rooms and a reception foyer for hosting up to around 250 guests. The Carlyle Restaurant, Café Carlyle, Bemelmans Bar as well as an array of special suites are also available for private functions.

The Carlyle Restaurant:

The Executive Chef has created a menu of classic American cuisine with European flair that features favorites such as Dover Sole and Lobster Bisque, in addition to seasonal specialties.

Café Carlyle:

Opened since 1955, Café Carlyle offers a classic cabaret experience and music-themed murals by Oscar-winning French artist, Marcel Vertès. The intimate supper club’s rich history includes past performances from legends such as Bobby Short and Elaine Stritch. Guests can now enjoy modern -day acts including Isaac Mizrahi, Alan Cumming, Rita Wilson and more.

Bemelmans Bar:

A favorite of Upper East Siders and visitors alike, Bemelmans Bar is a special hideaway where artist and author Ludwig Bemelmans’ whimsical illustrations come to life. Guests can enjoy classic cocktails and live music nightly.

The Gallery:

Inspired by the Topkapi Place in Turkey, the Gallery was designed under the creation of the legendary Renzo Mongiardino. Guests can enjoy an all-day a la carte menu, afternoon tea or cocktails.

Services & Amenities

- Sisley-Paris Spa
- Fitness Studio
- Yves Durif Salon
- Twice-daily maid service
- Rose Buds® for children
- Pet-Friendly
- Wi-Fi

Walking Distance

- Madison Avenue Shopping (1 Minute)
- Central Park (2 Minutes)
- Subway (2 Minutes)
- Central Park Boat House (7 Minutes)
- The Metropolitan Museum of Art (9 Minutes)
- The Guggenheim (12 Minutes)
- Central Park Zoo (15 Minutes)
- American Museum of Natural History (15 Minutes)